

RE 18307-19/04.10

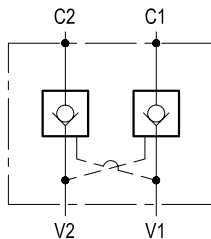
1/2

Replaces: RE 00171/02.07

# Pilot operated check, dual

VSO-DE-FC2

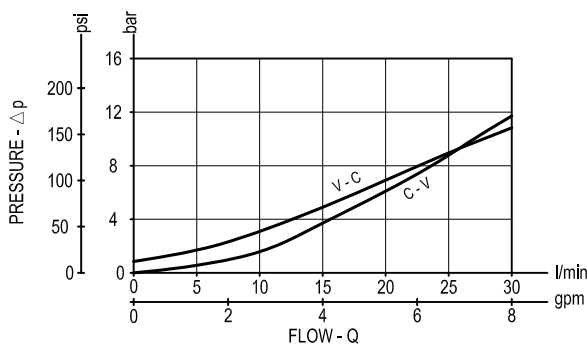
05.53.44 - X - Y - Z



## Description

Flow is allowed to pass in one direction (V1 to C1 or V2 to C2), then the valve remains closed (checked) in both reverse directions (C1 to V1 or C2 to V2) in order to hold and lock in position the cylinder or other actuators; reverse flow is possible only when sufficient pilot pressure is applied at V2 or V1, which act as cross connected pilot ports, and the pilot piston lifts the poppet from its seat overcoming cylinder port pressure. For better safety and compact assembly, C1 and C2 ports are flanged (gasket mounted) directly on the actuator.

## Performance



## Technical data

### Hydraulic

Operating pressure	bar (psi)	up to 210 (3000)
Max. flow	l/min (gpm)	30 (8)
Pilot ratio		7 : 1

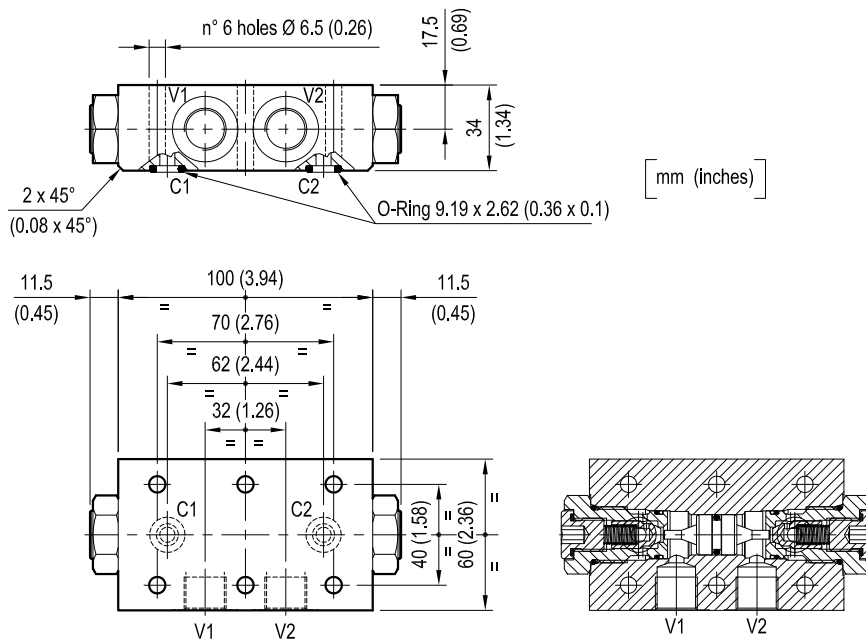
The version with O-Ring and heavier spring is generally recommended.

### General

Manifold material		Aluminium
Note: aluminium bodies are often strong enough for operating pressures exceeding 210 bar (3000 psi), depending from the fatigue life expected in the specific application. If in doubt, consult our Service Network.		
Weight	kg (lbs)	0.9 (1.98)
Fluid temperature range	°C (°F)	between -30 (-22) and +100 (212)
Other technical data		see data sheet RE 18350-50

**Note:** for applications outside these parameters, please consult us.

**Dimensions**



**Ordering code**

<b>05.53.44</b>	<b>X</b>	<b>Y</b>	<b>Z</b>
-----------------	----------	----------	----------

Pilot operated check, dual

O-Ring on pilot piston

= 00 No O-Ring

= 10 With O-Ring

Port sizes

V1 - V2

C1 - C2

= 02

G 3/8

Ø 6 (0.24)

**SPRINGS**

Cracking pressure  
bar (psi)

= 00	only for X=00	1 (15)
= 01	for X=00 and X=10	4.5 (65)

Type	Material number
055344000200000	R930002457
055344000201000	R930002459
055344100201000	R930002461

Type	Material number